

Five-Year Network Assessment

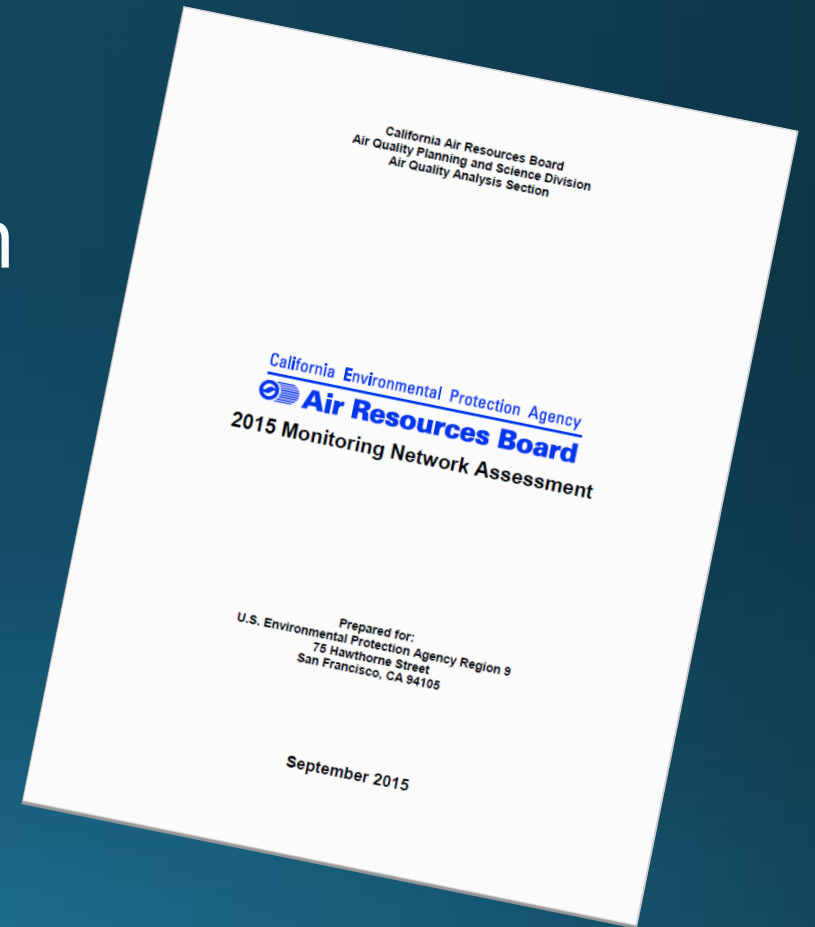
PQAO Training 2019: June 4- 6, 2019

Craig Anderson
Air Quality Analysis Section
CARB Air Quality Planning & Science Division



Outline

- The Five Ws of the Assessment
- Assessment vs. Annual Network Plan
- Monitoring Considerations and Priorities
- Using the Assessment as a Tool
- Timeline

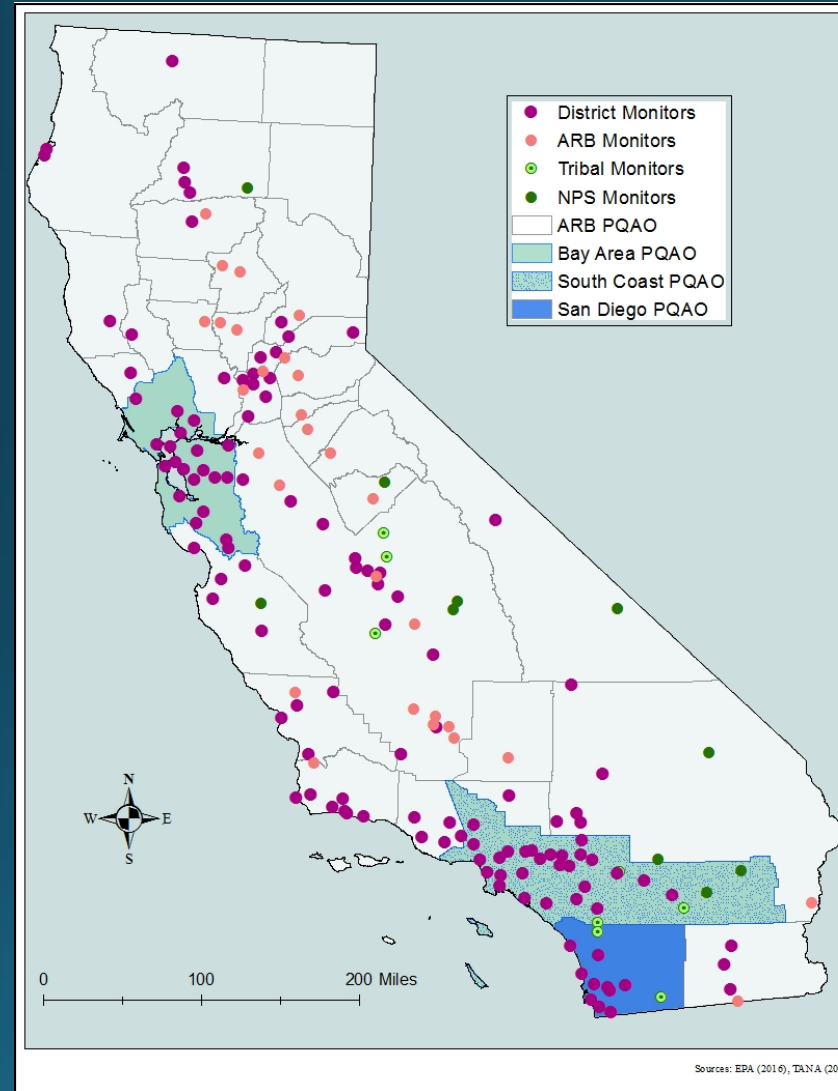


What is the Assessment and Why does it have to be Prepared?

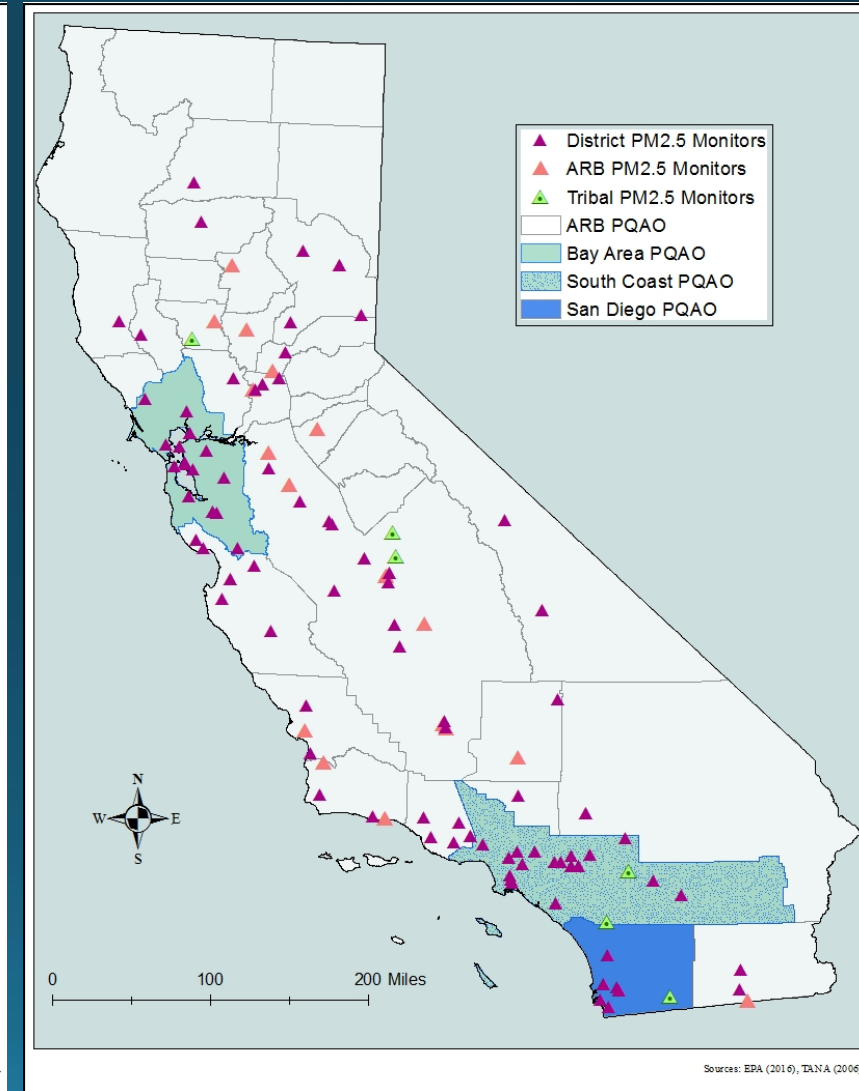
- 40 CFR 58.10(d) - Annual monitoring network plan and periodic network assessment (<https://www.ecfr.gov/>)
- Evaluate:
 1. whether new sites are needed
 2. whether existing sites are no longer needed and can be terminated
 3. whether new technologies are appropriate
- Consider:
 1. ability to support AQ characterization for areas with relatively high populations of susceptible individuals
 2. effect discontinuing sites would have on data users other than the agency itself
- Prepare and submit!

Where does the Assessment Cover?

- Large network
- 35 air districts + other agencies
- Various types of equipment
- Distinct air basins
- Distributed population
- Intra- and interstate transport



Ozone



PM2.5

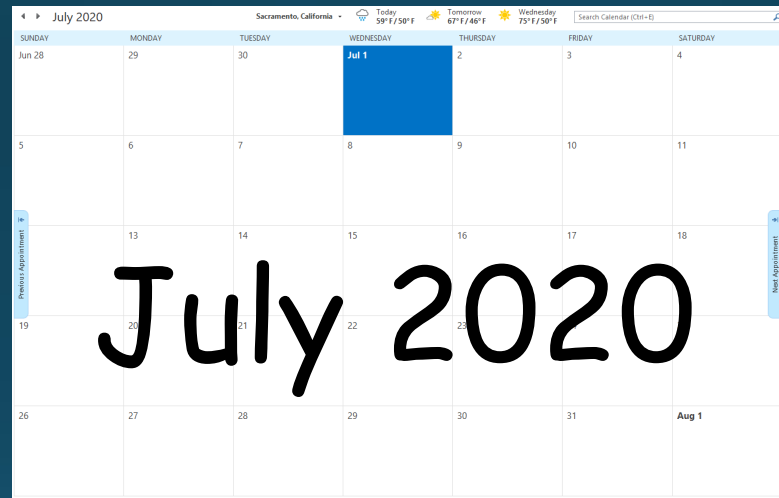
Who Prepares the Assessment?

- CARB or local district
- In 2015:
 - CARB – 25 districts in the PQAO
 - Bay Area AQMD + Yolo-Solano AQMD
 - South Coast AQMD
 - San Diego County APCD
 - 6 Remaining Districts: San Joaquin, Monterey, North Coast, Sacramento Metro., San Luis Obispo, Santa Barbara

<https://www3.epa.gov/ttnamti1/5yrnetassess.html>

When is the Assessment Due?

→ Every five years beginning July 1, 2010

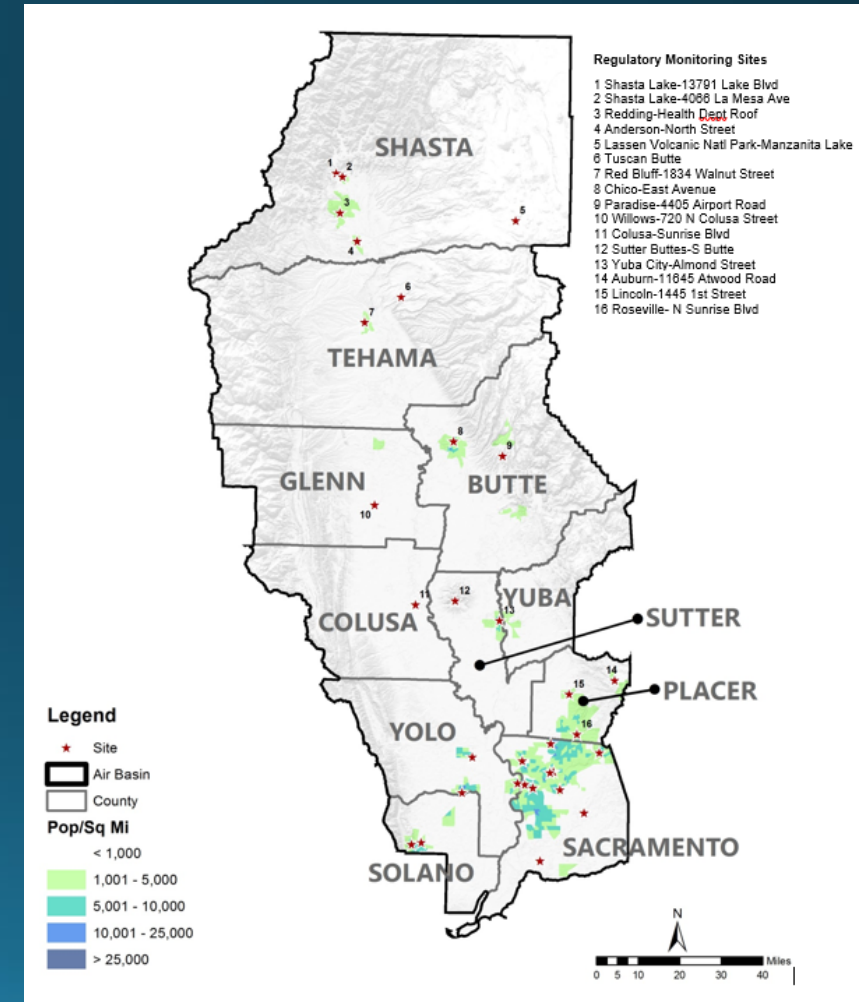


Who Receives the Assessment?

→ EPA Regional Administrator

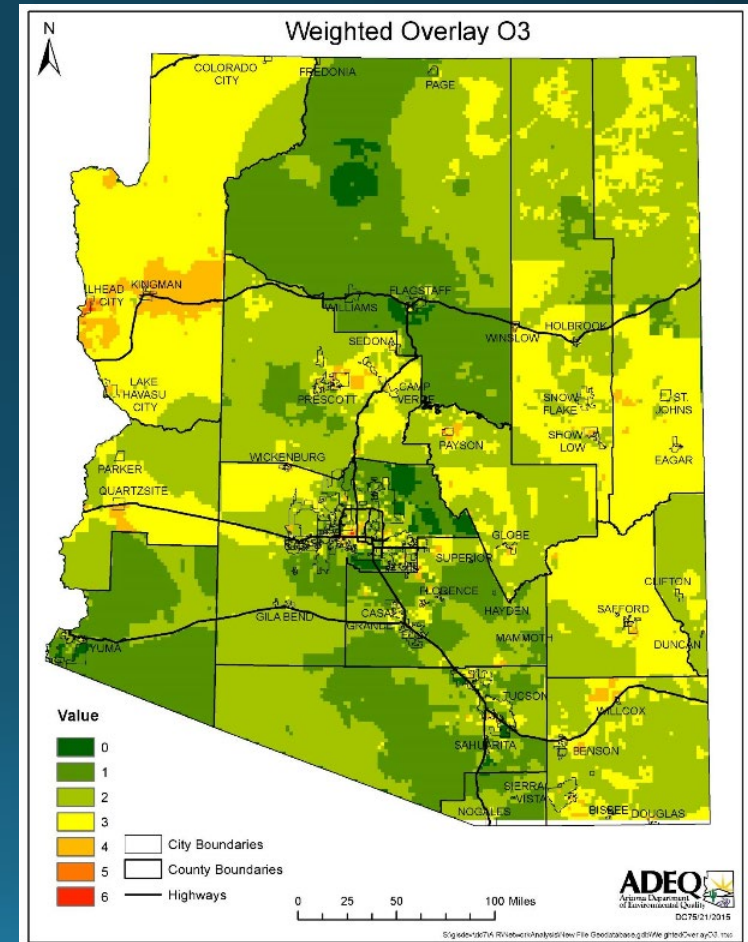
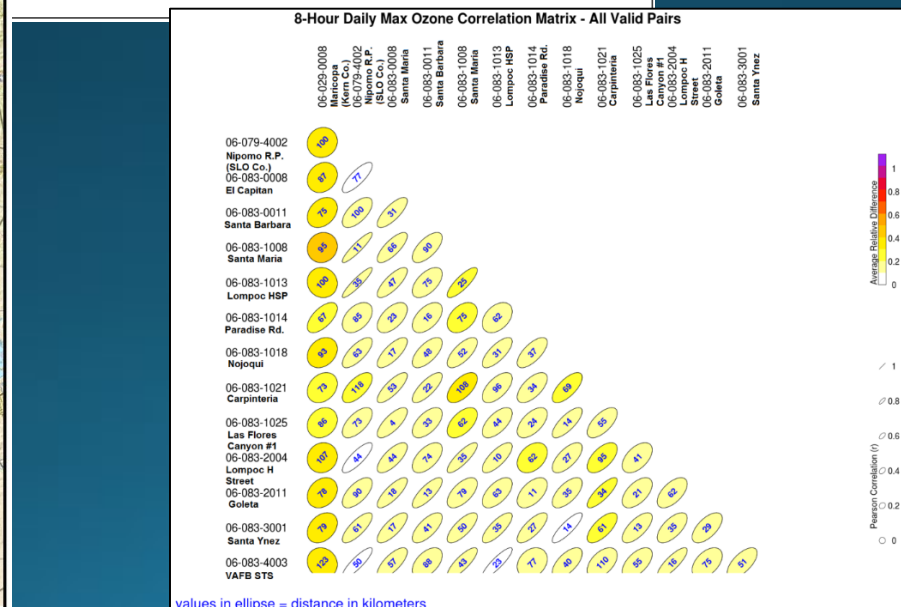
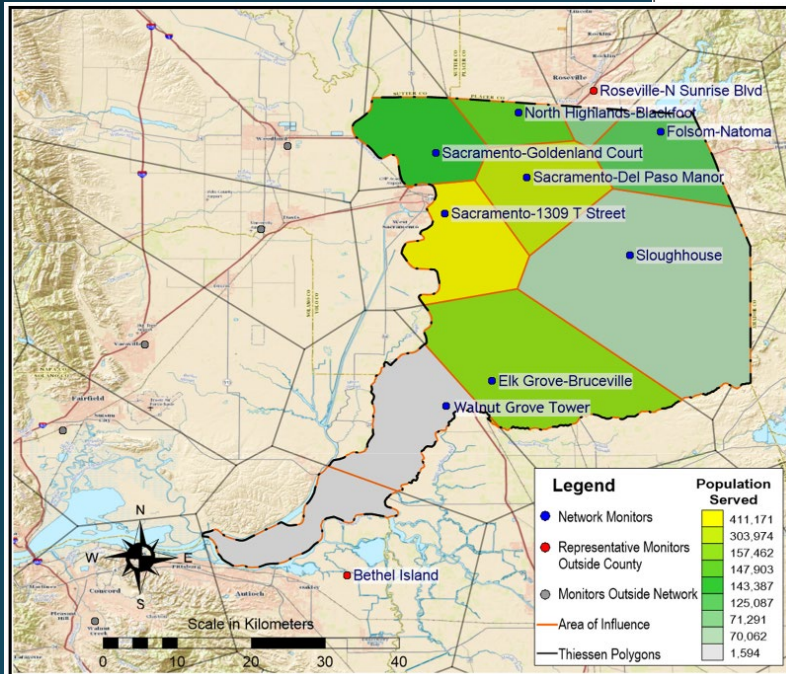
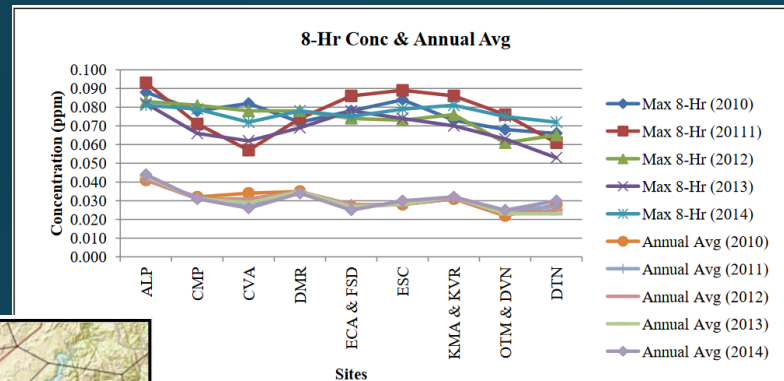
How will the Assessment be Prepared?

- 2015 CARB Assessment
 - Air basin-level
 - Population density
 - Topography
 - Meteorology
 - Emissions sources
 - Monitoring site locations
 - High concentration
 - Design values



How will the Assessment be Prepared?

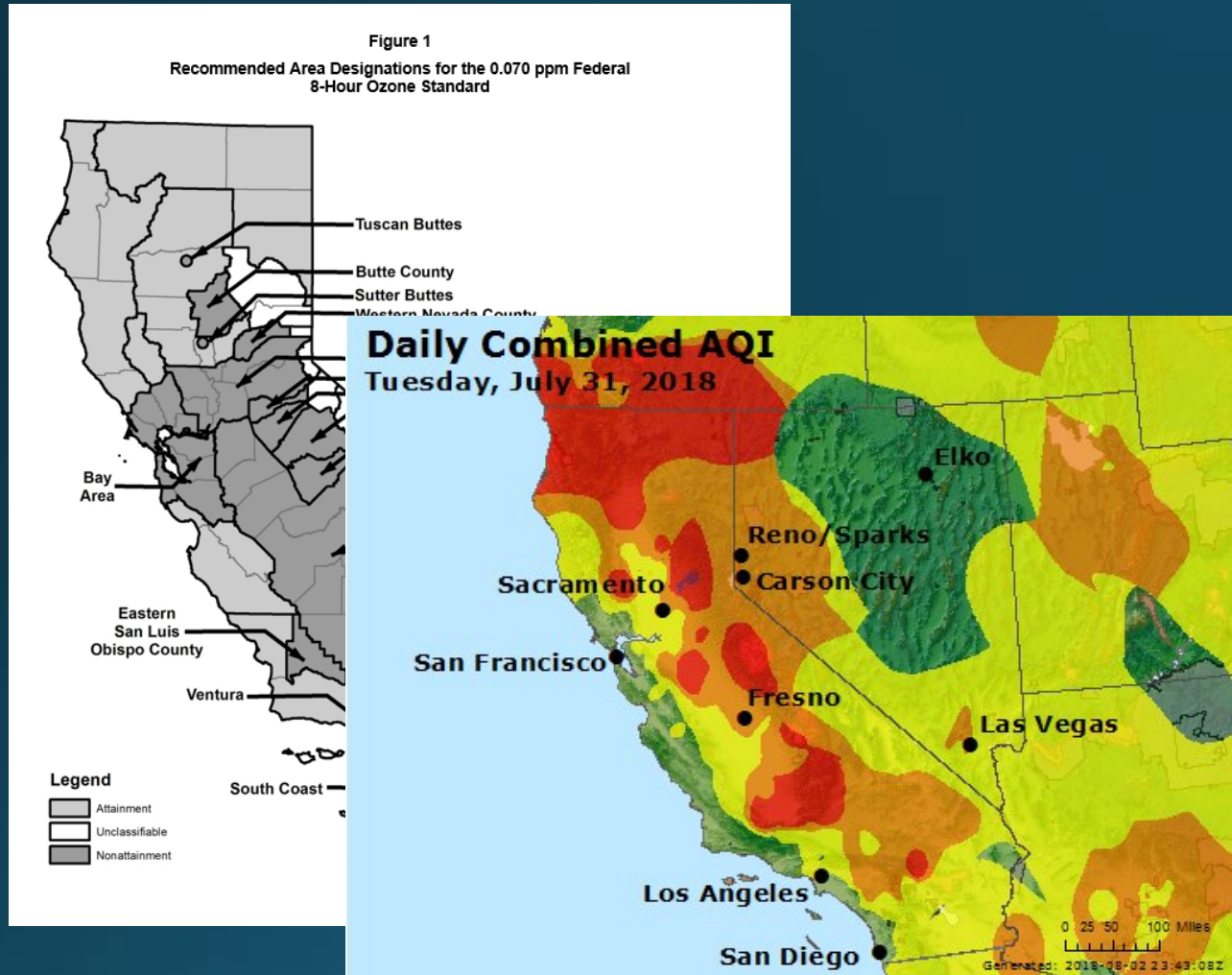
- Wide-range of statistics, GIS layers, and analyses used across Districts and states:



Assessment vs. Annual Network Plan

	<u>Assessment</u>	<u>ANP</u>
Preparation Interval:	Every 5 years	Annual
Required Content:	Limited	Specific and extensive
Public Comment Period:	None	Minimum of 30 days
Time Frame:	Future (2-5 years)	Near-term (previous year through next 12-18 months)

Monitoring Considerations and Priorities



<https://airnow.gov/>

- Monitoring in nonattainment/attainment areas
- Monitor density
- Resources
- Equipment support requirements
- Minimum monitoring
- Collocation requirements
- AQI reporting

Using Assessment as a Tool

- Well-documented support for:
 - Adding/moving monitoring sites
 - Closing monitoring sites
- Provides material for upper-management/Boards when requesting more resources
- Serves as long-term guidance for monitoring program
- Supports preparation of Annual Network Plan

Timeline for 2020 Assessment

Summer 2019

- Review previous assessments
- Define goals
- Reach out to CARB PQAO Districts

Spring 2020

- Contact Districts where monitoring changes are suggested
- Send draft assessment to Districts

June 2019

Fall/Winter 2019-2020

- Prepare outline
- Develop assessment methods and tools
- Meet with CARB planning and monitoring staff

July 2019

Submit final assessment to EPA by July 1

Summary

- Who? → CARB and local districts
- What? → Evaluate adequacy of monitoring network
- When? → July 1, 2020
- Where? → Each PQAQ or District
- Why? → Federal CFR requirement
- How? → **Up to you!**

Thank You!

Contact Information

Craig.Anderson@arb.ca.gov

(916) 324-0550