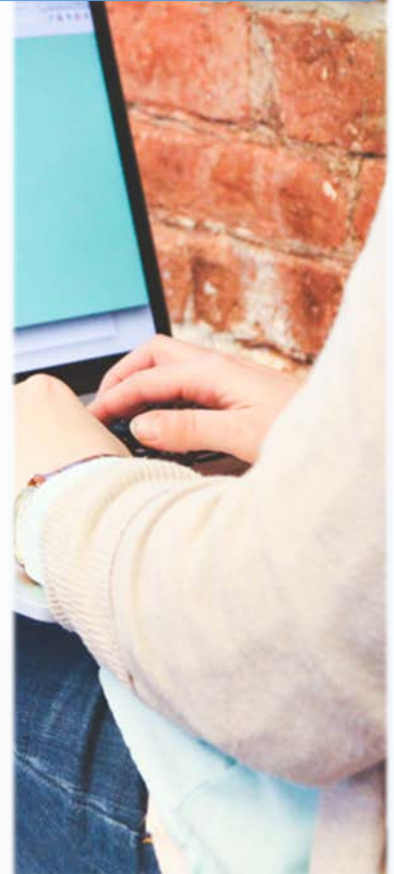


# End-User Perspective

**Jason Mandly**  
**Associate Air Quality Planner**  
**Butte County Air Quality Management District**



# We care about your data







**We use it every day**



# Monitoring Locations

## Butte County Air Quality Management District

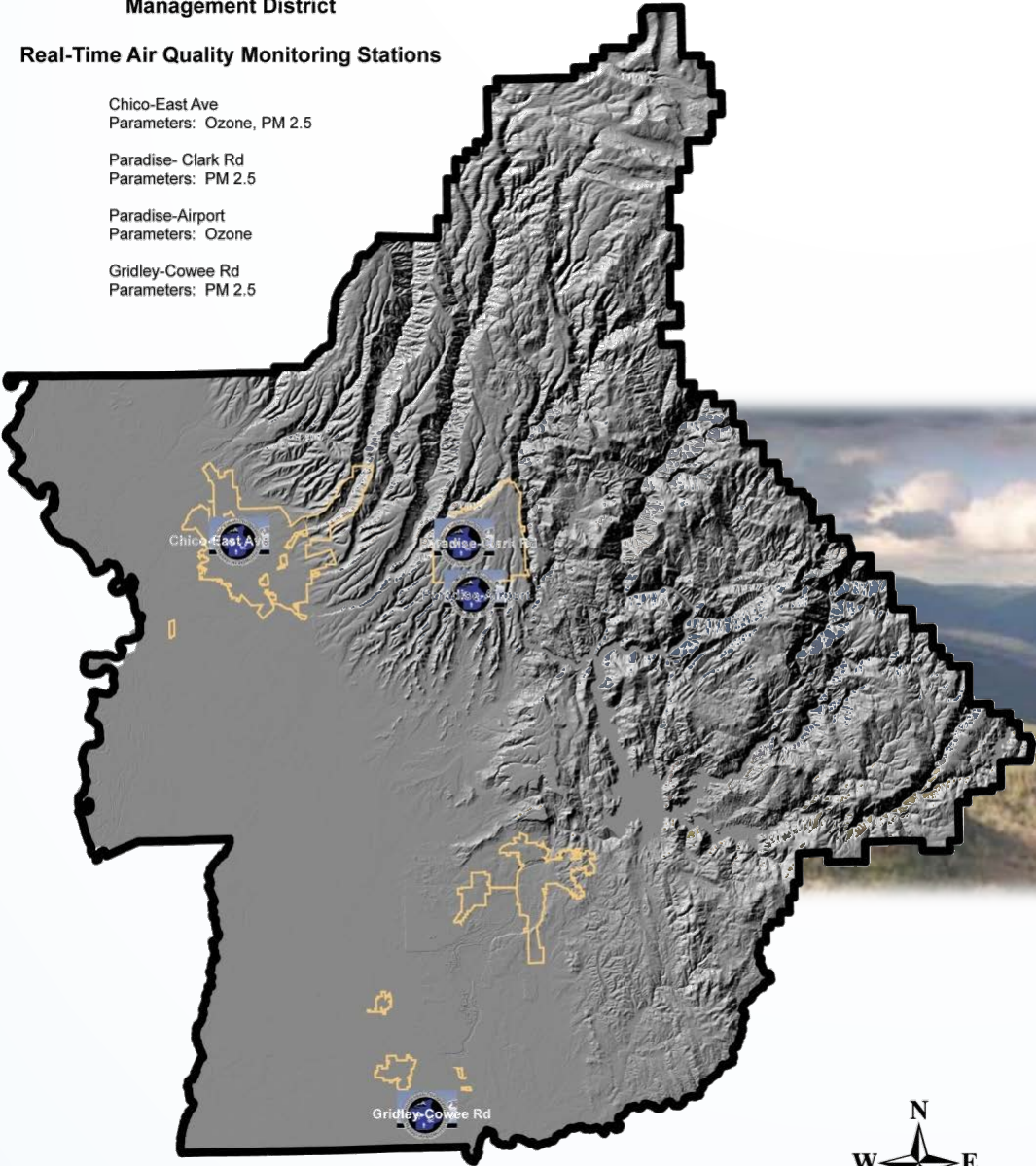
### Real-Time Air Quality Monitoring Stations

Chico-East Ave  
Parameters: Ozone, PM 2.5

Paradise-Clark Rd  
Parameters: PM 2.5

Paradise-Airport  
Parameters: Ozone

Gridley-Cowee Rd  
Parameters: PM 2.5



2016-11-28

STATION	1	2	3	4	5	6	7	8	9	10	11	12	13	14	15	16	17	18	19	20	21	22	23	24	
Chico E	18	14	14	13	12	18	18		13	8	7	8	9	11	7	8	9	7	6	9	10	11	7	7	
Colusa	1	0	4	4														4	6	8	9	5			
Davis UCD	5	8	6	3	3	4					5	4	1	3	4	0	2	3	3	4	6	4	0		
Gridley																									
Paradise	0	3	2		0	2	3	6	7	4	1				0	3	4	18	23	9	8	19	9	8	7
Roseville												0	1		0					0	2	2			
Sac T St	4	3	2	0				2	2	1	0	3	3	4	8	8	4	0	1	2	2	2	2	2	
Willows	6	7	7	6	6	5	3	4	7	7	6	6	10	10	6	5	3	7	9	1		3	5	4	
Yuba Almond	3									1									2	5	4	4	3	0	0

🔍

**QUICK LINKS**

- Forms and Applications
- Wildfires and Air Quality
- Check Before You Light
- Carl Moyer Grants
- Wood Stoves and Fireplaces
- Receive AQ Advisory/Forecast Emails
- Complaints

**CHECK BEFORE YOU LIGHT**

**Tuesday, November 29**

Chico - *No Restrictions*

Paradise - *No Restrictions*

Gridley - *No Restrictions*

---

**Wednesday, November 30**

Chico - *No Restrictions*

Paradise - *No Restrictions*

Gridley - *No Restrictions*

**TODAY'S AIR QUALITY**

*Nov 29 (Tue)*

Chico (Valley): (PM 2.5)

**Good**

---

Paradise (Foothills): (PM 2.5)

**Good**

---

Gridley: (PM2.5)

**Good**

---

Oroville: (PM2.5)

**Good**

**OUTDOOR BURNING**

*Nov 29 (Tue)*

[Residential Burning](#)

Permissive Burn Day [where burning is allowed.](#)

# AQI Forecast

Active children and adults, and people with lung disease, such as asthma, should reduce prolonged or heavy exertion outdoors.

Active children and adults, and people with lung disease, such as asthma, should reduce prolonged or heavy exertion outdoors.

Everyone should avoid all physical activity outdoors.

# The Butte Model

2nd Edition

Import from READY  
<http://ready.arl.noaa.gov/READYometus.php>  
 Lat/Long: 39.70, -121.91  
 Start at 06Z of day you're forecasting for (11PM PST)  
 Create 24hr Forecast

MANUAL -->

AUTO -->

Date	Forecaster	8am (+9) Surface Temperature (C)	8am (+9) 900mb Temperature (C)	AM Stability (F)	11pm (+24) Surface Temperature (C)	2-8am (+3-+9) Average Wind Speed (knots)	5-11pm (+18-+24) Average Wind Speed (knots)	24-hr (+3-+24) Average Wind Speed (knots)	2pm (+15) 500mb Height (Dm)	Forecasted 24-hr PM2.5 Average (ug/m3)
		-1.0	1.0	22.0	1.0	1.9	1.0	1.8	579.0	34.4
		4.0	4.0	0.0	5.8	3.8	5.0	3.6	562.6	15.3

Copy results into next page.



Butte County Air Quality Management District

The whole neighborhood benefits when you

# CHECK

Before You Light

✓ 332-9409  
 ✓ [bcaqmd.org](http://bcaqmd.org)  
 ✓ @bcaqmd

Questions? Call 332-9400

**Curtailment  
 Program  
 Forecasting**



**California Air Resources Board - Meteorology Section  
 Basinwide Ag-Burn Acreage Allocation - Sacramento Valley Air Basin**

Date: 2-Jan-16

Local Time: 07:22 AM

Meteorologist: Mims

Ag Burn Decision Above 3000 ft: Permissive Burn Day (Fair)

A.M. Stability (°F) = 4

Wind Speed (mph) = 7

500 millibar height (decameters) = 557

Average Rainfall (in) = 0

Meteorological (MET) Factor = 0.6

Air Quality (AQ) Factor (Basinwide 00-06 PST Average PM<sub>2.5</sub>) = 19.1

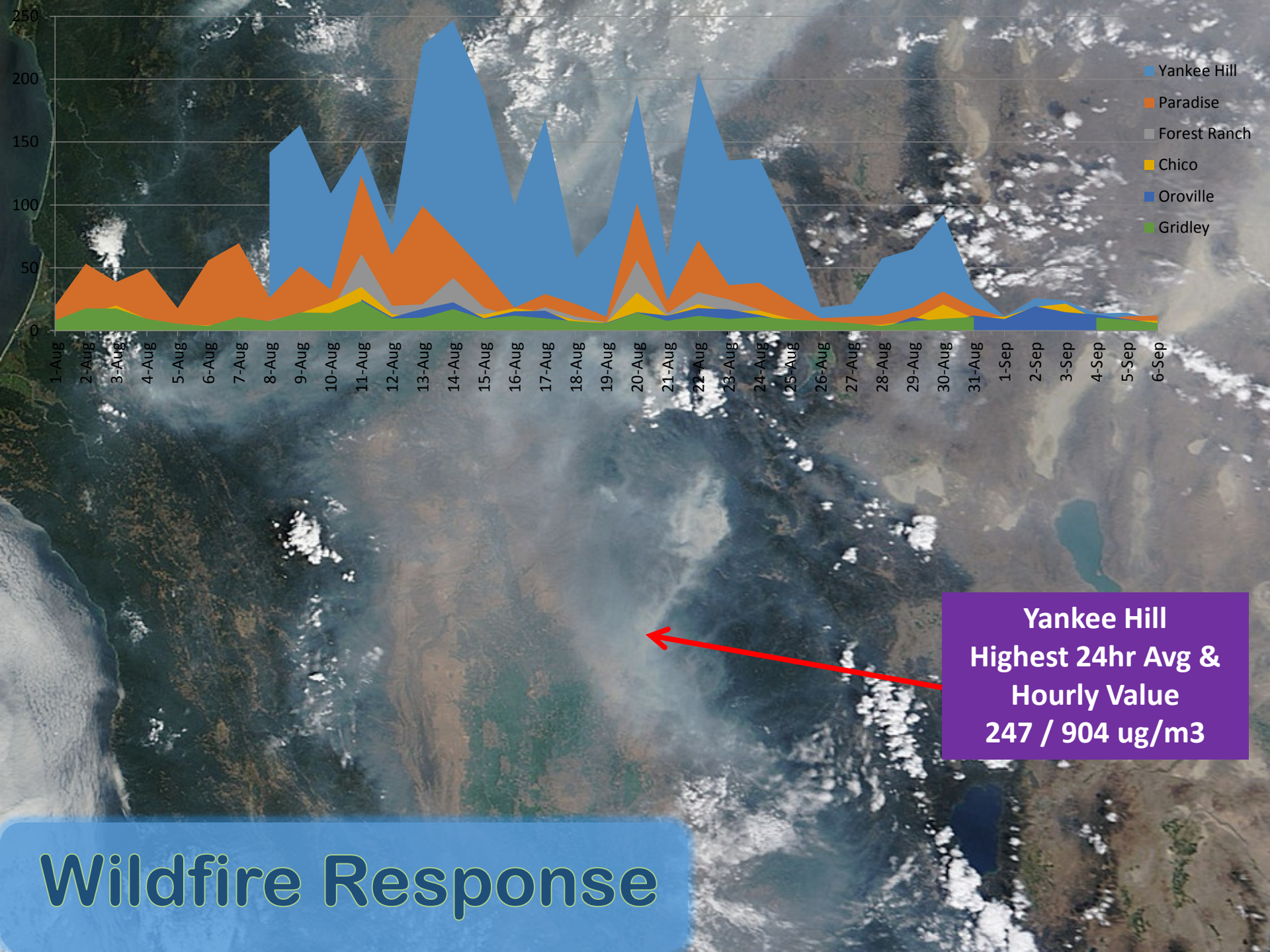
Allocation Equation: = 5876

ARB REVISED Basinwide Allocation = 2000

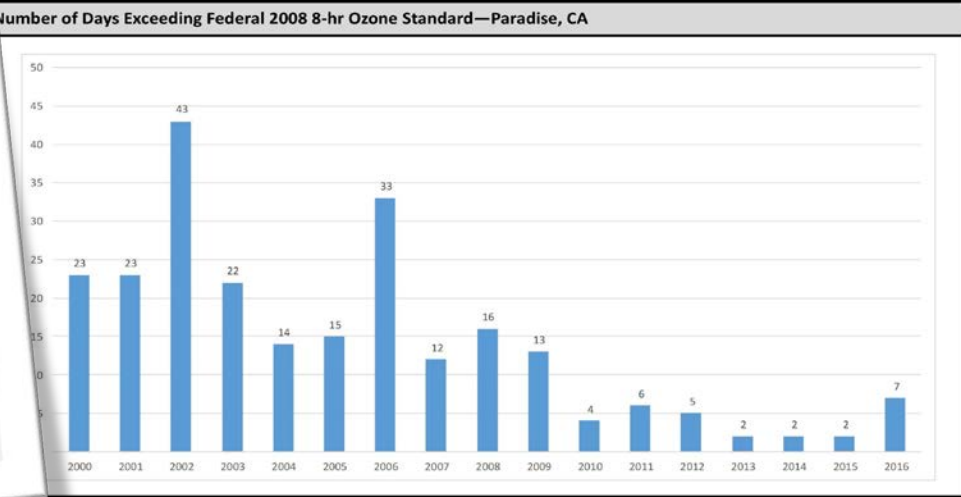
Revised Allocation = 1680

**Burning  
Decisions**

District	Yesterday's 24-Hr Avg PM <sub>2.5</sub>	Yesterday's PM <sub>2.5</sub> (0-6 PST)	Red Fact	(Acres)	Conc	PM <sub>2.5</sub> (PST)	Stn
Colusa	4	3	1	0.17	200	5	COL
Sutter	10	4	1	0.17	200	23	YUB
Butte	12	9	0.8	0.17	160	28	CIC-GRD
Yolo/Solano	6	3	1	0.15	200	6	DAV-WOO
Glenn	4	4	1	0.13	200	6	WLW
Sacramento	23	16	0	0.09	0	45	SAC
Yuba	10	4	1	0.07	200	23	YUB
Placer	22	45	0.6	0.05	120	29	ROS
Tehama	4	4	1	200 acres unless reduced by PM	200	6	WLW
Shasta	13	10	1		200	10	AND

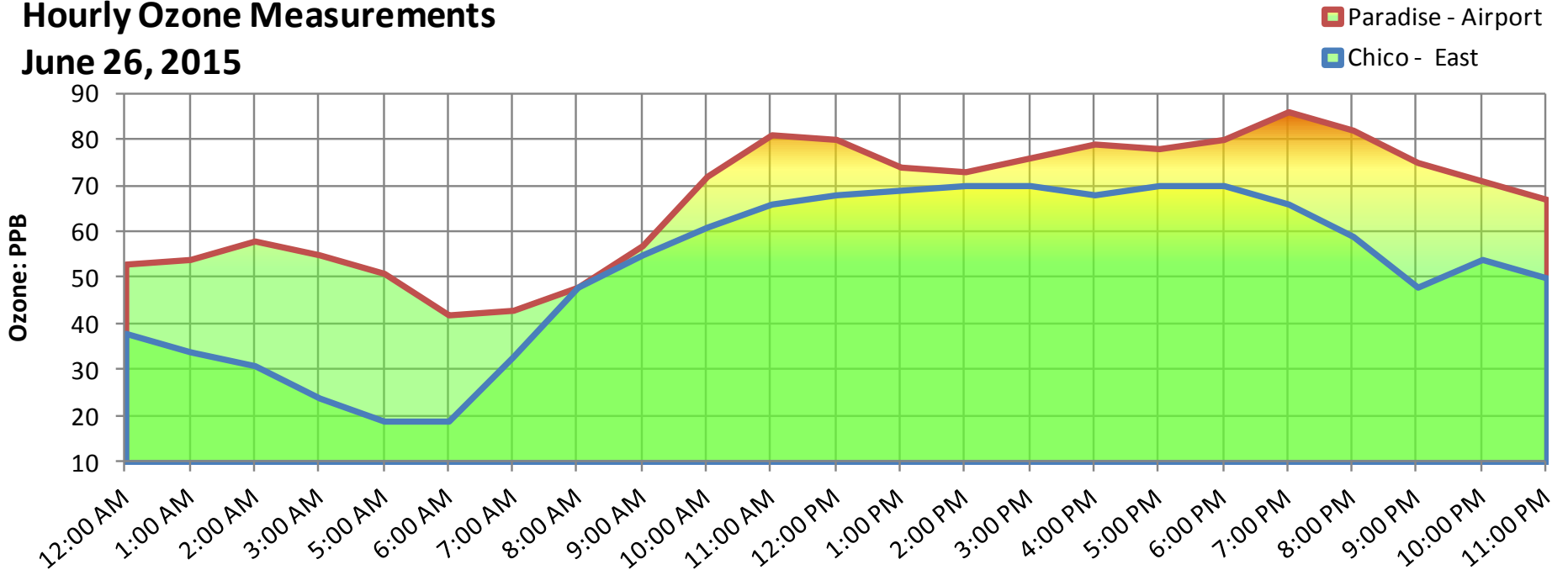






# Trends and Analysis

## Hourly Ozone Measurements June 26, 2015



# Attainment with the AAQS

**On September 10, 2013, EPA published a finding that the Butte County PM<sub>2.5</sub> non-attainment area had attained the 2006 24hr PM<sub>2.5</sub> standard with a design value of 34 ug/m<sup>3</sup>.**

**On August 19, 2015, EPA published a finding that the Butte County ozone non-attainment area had attained the 2008 8-hour ozone standard with a design value of 74ppb.**

**ADDRESSES:** EPA has established docket number EPA-R09-OAR-2012-0800 for this action. Generally, documents in the docket for this action are available

electronically at [www.regulations.gov](http://www.regulations.gov) and in hard copy at EPA Region IX, 75 California Street, San Francisco, California. While all documents in the docket are listed at [www.regulations.gov](http://www.regulations.gov), some information may be publicly available only at the hard copy location (e.g., copyrighted material, large maps, multi-volume reports), and some may not be publicly available in either location (e.g., business information). To request the hard copy materials, please schedule an appointment during normal business hours with the contact listed in the **FOR FURTHER INFORMATION CONTACT** section.

## Table of Contents

- I. Summary of EPA
- II. Public Comment
- III. EPA's Final Action
- IV. Statutory and Regulatory

### I. Summary of EPA

On October 30, 2013, EPA proposed to determine that the Chico nonattainment area for fine particles less than 2.5 micrometers in diameter (PM<sub>2.5</sub>) has attained the 2006 24-hour PM<sub>2.5</sub> standard with a design value of 34 micrograms per cubic meter (ug/m<sup>3</sup>) based on a 3-year average of the 95th percentile of 24-hour PM<sub>2.5</sub> concentrations. The Chico PM<sub>2.5</sub> nonattainment area includes the southern portion of Butte County, California, which lies in the central portion of California's Sacramento Valley, which straddles the border between Butte County in the south and Siskiyou County in the north.



